



COUNTER DOOR FRAME
INSTALLATION INSTRUCTIONS

FREIGHT DAMAGE INSTRUCTIONS

*****IMPORTANT*****

Immediately upon delivery check condition of materials for visible concealed freight damage incurred in transit.

Under no condition should installation be made without authorization, as neither the carrier nor the Manufacturer will assume responsibility for labor costs involved in replacing damaged material that has been installed.

FOLLOW THE DIRECTIONS BELOW:

CONCEALED DAMAGE:

- (a) Must be inspected by carrier's representative within 15 days from date of delivery.
- (b) Consignee must obtain copy of Inspection Report.
- (c) Material should not be moved from point of delivery to other premises prior to discovery and/or reporting of damage.
- (d) Container and packing should be retained by consignee until inspection is made.

VISIBLE DAMAGE:

- (a) Must be inspected by carrier's representative within 15 days from date of delivery.
- (b) Consignee must obtain copy of Inspection Report.
- (c) Material should not be moved from point of delivery to other premises prior to discovery and/or reporting of damage.
- (d) Container and packing should be retained by consignee until inspection is made.

NOTE: IF DAMAGE IS CERTAIN, GOODS SHOULD NOT BE UNPACKED UNTIL INSPECTION IS MADE. IF DAMAGE IS UNCERTAIN, PACKAGES MAY BE OPENED BUT PACKING MATERIAL MUST BE SAVED UNTIL INSPECTION IS MADE.

INCOMPLETE DELIVERY:

- (a) Should be noted on delivery receipt.
- (b) Acknowledged by driver's signature.
- (c) Start tracing immediately.
- (d) Notify shipper.

RETURNING DAMAGED MATERIAL:

If damaged to the extent that it is necessary to return to the Manufacturer to be repaired, please do as follows:

- (a) Obtain permission to do so from the delivering carrier.
- (b) Route the return shipment via the identical carrier(s) involved in the original shipment.
- (c) Notify the Manufacturer when shipped.

PRE-INSTALLATION INSTRUCTIONS

WARNING

READ AND FOLLOW THESE INSTRUCTIONS THOROUGHLY – THE COOKSON COMPANY WILL NOT BE HELD RESPONSIBLE FOR ANY CHARGES INCURRED THROUGH MISSING PARTS, OPERATION, OR DAMAGE– UNLESS THESE INSTRUCTIONS HAVE BEEN FOLLOWED.

- 1) If you have received more than one door, you will find that all major parts and pieces for any one door are marked with corresponding numbers; therefore, a complete door should be composed of parts bearing the same numbers and letters.

DO NOT INTERCHANGE PARTS FROM ONE DOOR TO ANOTHER!!!

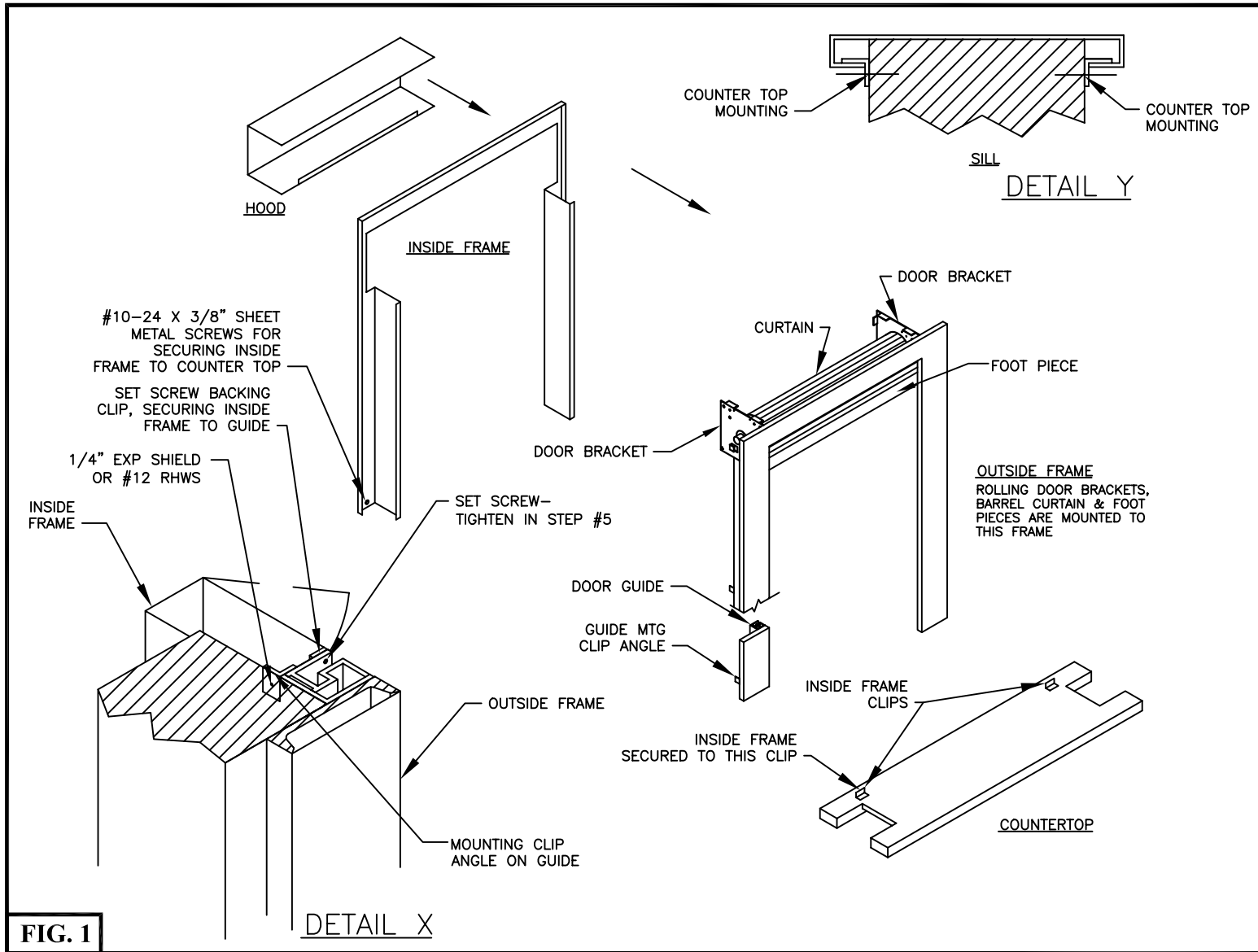
- 2) Before installing the door see that all component markings agree.
- 3) Before attempting installation of the door and, specifically, before leaving the jobsite make certain you have read and adhered to the attached "Safety Check List".
- 4) Should there be any discrepancies in the job conditions or manufactured materials, contact The Cookson Company in writing or by calling 1-800-294-4358 for Western U.S. and Canada or 1-800-390-8590 for Eastern U.S. and Canada. If door was purchased by a Cookson Distributor and sold to another party they should contact the Distributor for Warranty or Repair parts.

SAFETY CHECK LIST

IN ORDER FOR YOU TO ASSURE YOUR CUSTOMER THAT THIS DOOR HAS BEEN INSTALLED PROPERLY AND IN A SAFE MANNER, WE ASK THAT YOU CHECK THE FOLLOWING BEFORE LEAVING THE JOBSITE.

- 1) Make certain that the proper amount of tension has been applied to the torsion springs, in order to properly counterbalance the weight of the curtain.
- 2) Assure yourself that the tension wheel is securely fastened in place.
- 3) Assure yourself that sprockets or gears requiring keys have the correct keys installed and drive shaft sprockets or gears are retained by cotter pins.
- 4) Recheck the setscrews (One over key - the other located at 45° from key) in each sprocket or gear for tightness.
- 5) Check all fasteners holding guides to building structures.
- 6) Check all fasteners used in assembling door components.
- 7) Instruct owner or his/her representative in the proper method of operating this door.

COUNTER DOOR FRAME FRAME INSTALLATION INSTRUCTIONS



NOTE:

Door and frame is shipped completely assembled and must be disassembled into the four (4) following pieces before installation:

- 1- Hood
- 2- Inside Frame
- 3- Outside Frame- Lift up to remove
- 4- Countertop

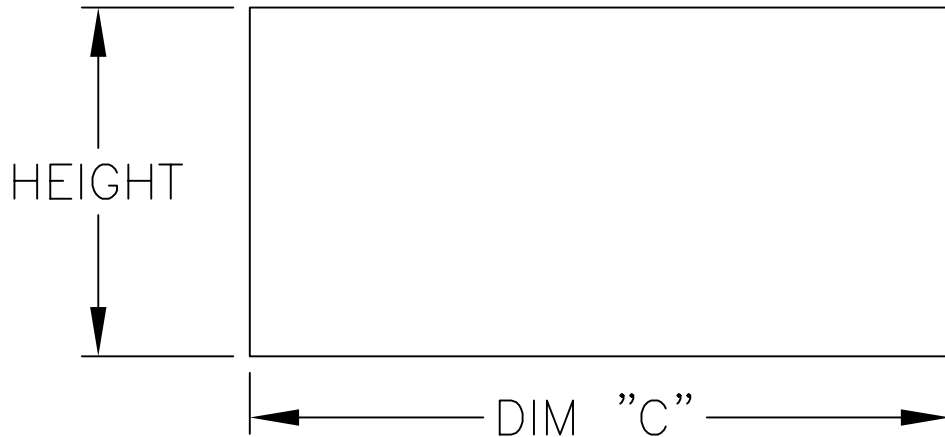
To remove inside frame, loosen set screw and push out from under clips mounted on guide- See Detail X.

FASTENERS

JAMB	FASTENERS	INSTRUCTIONS
WOOD	#12 RHWS	Pre-drill holes with 1/8" drill for mounting guides to jamb with #12 wood screws.
MASONRY	PLASTIC SHIELD WITH #12 RHWS	Drill concrete w/ø5/16" star drill 1-1/2" deep and insert #12 plastic shields as mfg by Holub.
STEEL	1/4" RHMS	Drill steel jambs with #7 drill and tap hole with 1/4-20 NC tap.

COUNTER DOOR FRAME

FRAME INSTALLATION INSTRUCTIONS



- 1) CHECK OPENING HEIGHT AND WIDTH (DIM "C").
- 2) CHECK SILL TO SEE THAT IT IS LEVEL. NOW PLACE COUNTERTOP ON SILL PER DETAIL "Y".
- 3) PLACE OUTSIDE FRAME ON COUNTERTOP AND TILT INTO POSITION AND SECURE TO JAMB. SEE DETAIL "X".
- 4) NOW SLIDE INSIDE FRAME OVER DOOR BRACKETS AND SLIP FRAME INTO CLIPS MOUNTED ON GUIDES AS SHOWN IN DETAIL "X".
- 5) LOWER CURTAIN TO COUNTERTOP AND MOUNT HOOD IN PLACE.
- 6) TIGHTEN SET SCREWS IN GUIDE GROOVE. MAKE SURE INSIDE FRAME IS FLUSH WITH TIP OF GUIDE AS SHOWN IN DETAIL "X".
- 7) NOW SCREW INSIDE FRAME TO CLIPS ON COUNTERTOP.
- 8) CURTAIN COUNTERBALANCE MECHANISM HAS BEEN COMPLETELY ADJUSTED AND FIELD ADJUSTMENT SHOULD NOT BE NECESSARY.