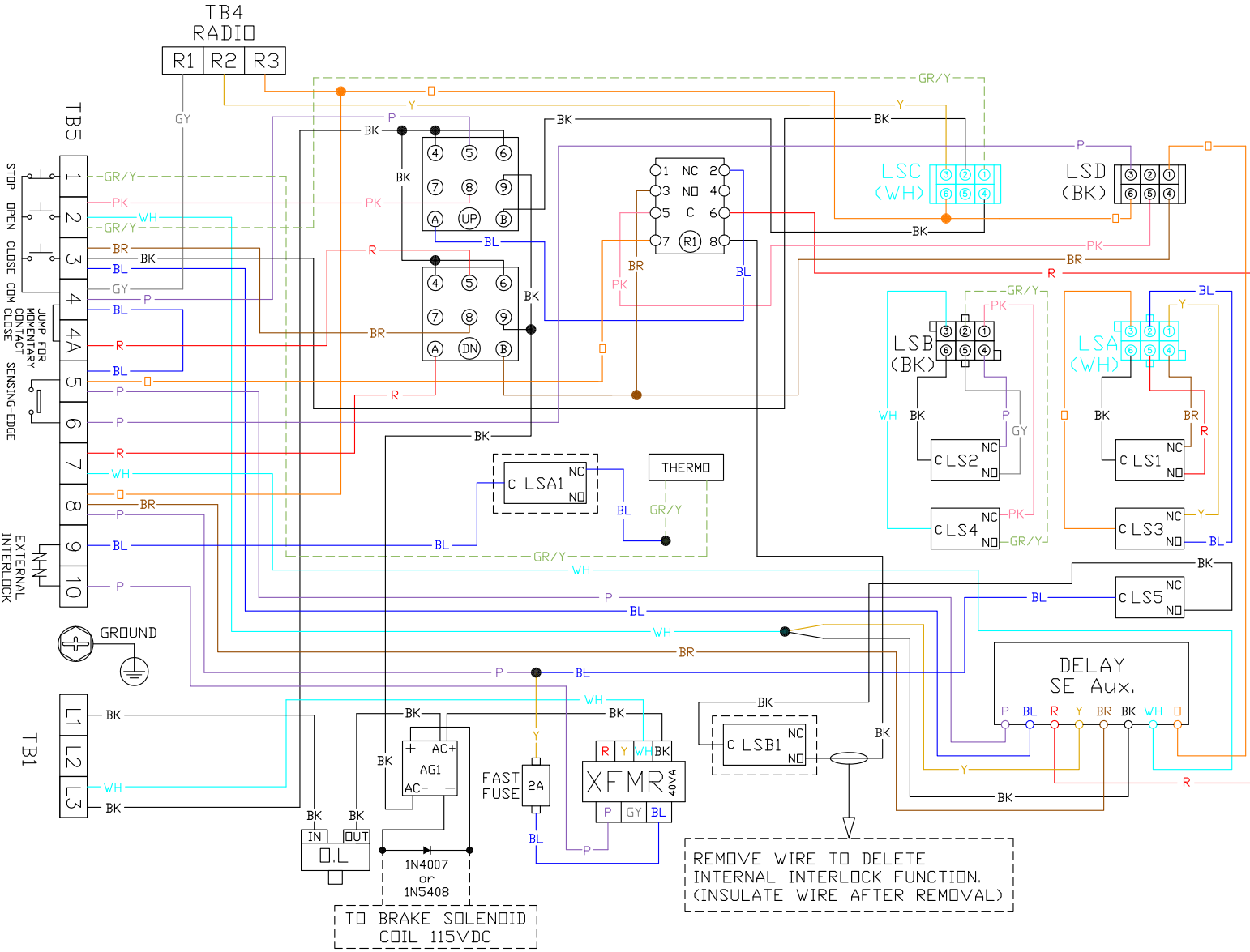
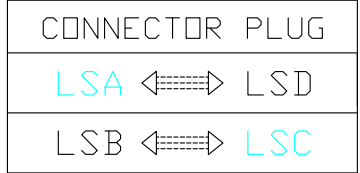


# MG Operator with Lock Interlock 115VAC 1 Phase Right Hand For 1/3HP and 1/2HP

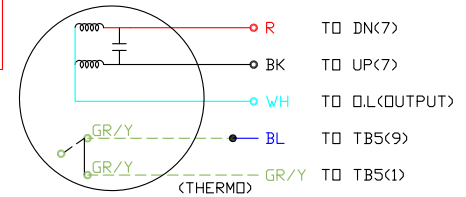
EN 104 R



- NOTES:**  
 UP-OPEN RELAY (COIL 24VAC)  
 DN-CLOSE RELAY (COIL 24VAC)  
 R1-INTERLOCK RELAY (COIL 24VAC)  
 LSA-LS1 & LS3 MICROSWITCH CONNECTOR  
 LSB-LS2 & LS4 MICROSWITCH CONNECTOR  
 LSC-OPEN CONTROL CONNECTOR  
 LSD-CLOSE CONTROL CONNECTOR  
 LS5-INTERNAL INTERLOCK MICROSWITCH  
 LSA1-MANUAL CUT-OFF MICROSWITCH  
 LSB1-INTERNAL INTERLOCK MICROSWITCH



- TERMINAL NUMBER:**  
 1 CONTROL STATION-STOP  
 2 CONTROL STATION-OPEN  
 3 CONTROL STATION-CLOSE  
 4 CONTROL STATION-COMMON  
 4&4A JUMP FOR MOMENTARY CONTACT CLOSE  
 5&6 SENSING-EDGE (S.E.) CONNECTION  
 7&8 DOOR CLOSING WARNING SIGNAL 24VAC  
 9&10 EXTERNAL INTERLOCK



115V 1 PHASE  
 MOTOR CONNECTION  
 2008.03.10

REMOVE WIRE TO DELETE  
 INTERNAL INTERLOCK FUNCTION.  
 (INSULATE WIRE AFTER REMOVAL)

TO BRAKE SOLENOID  
 COIL 115VDC